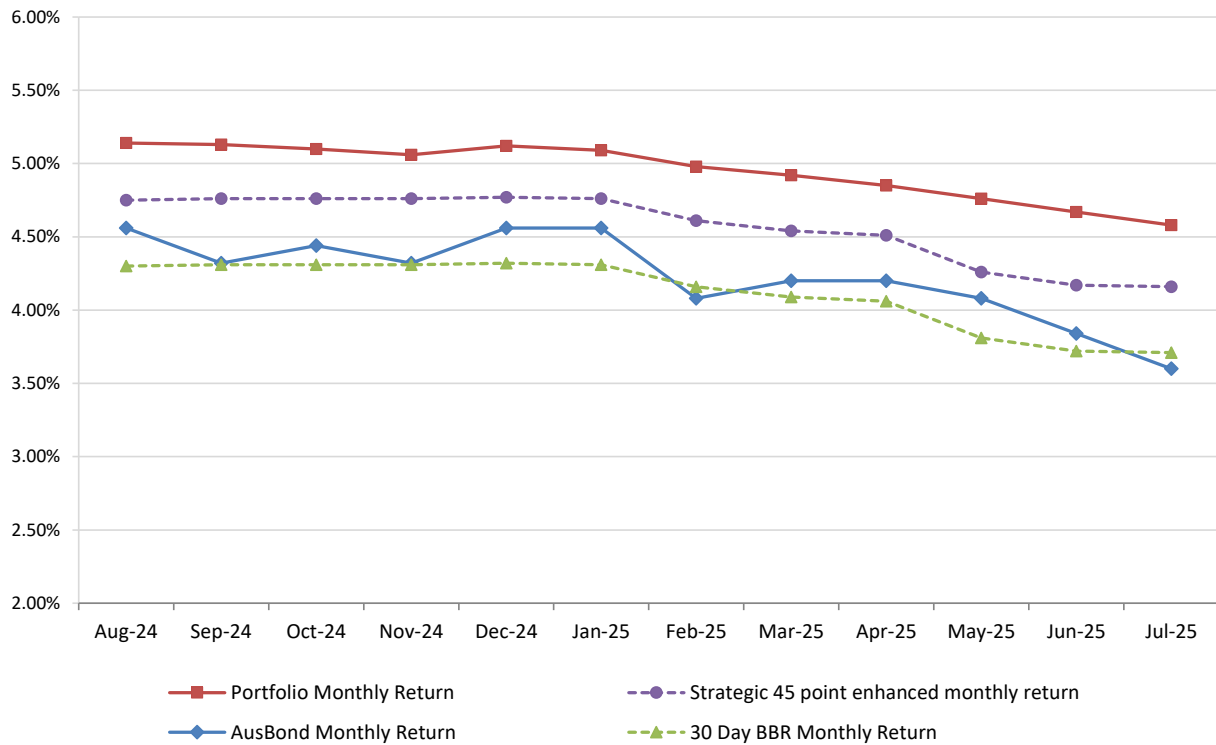


# **Attachment B**

**Investment Performance  
as at 31 July 2025**

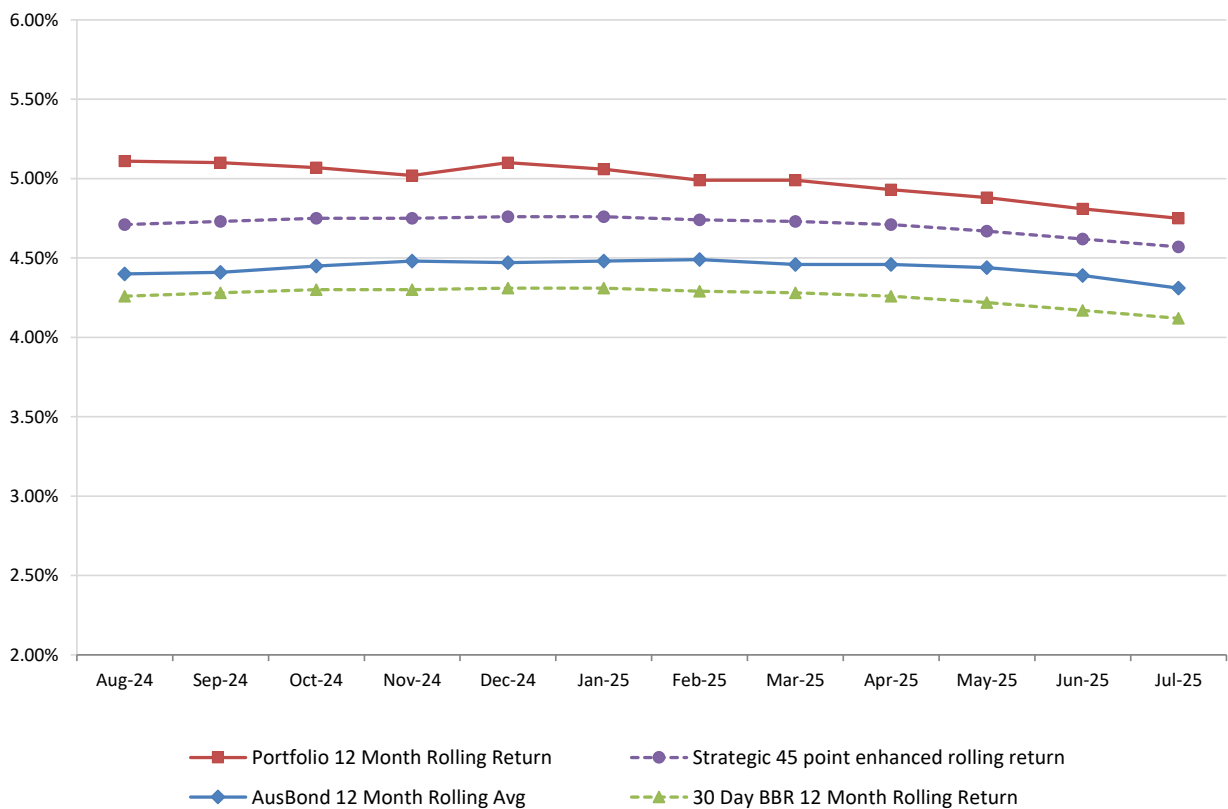
### Monthly Results

Actual Portfolio vs Strategic Enhanced Benchmark vs AusBond Benchmark vs 30 Day BBR Benchmark  
July 2025

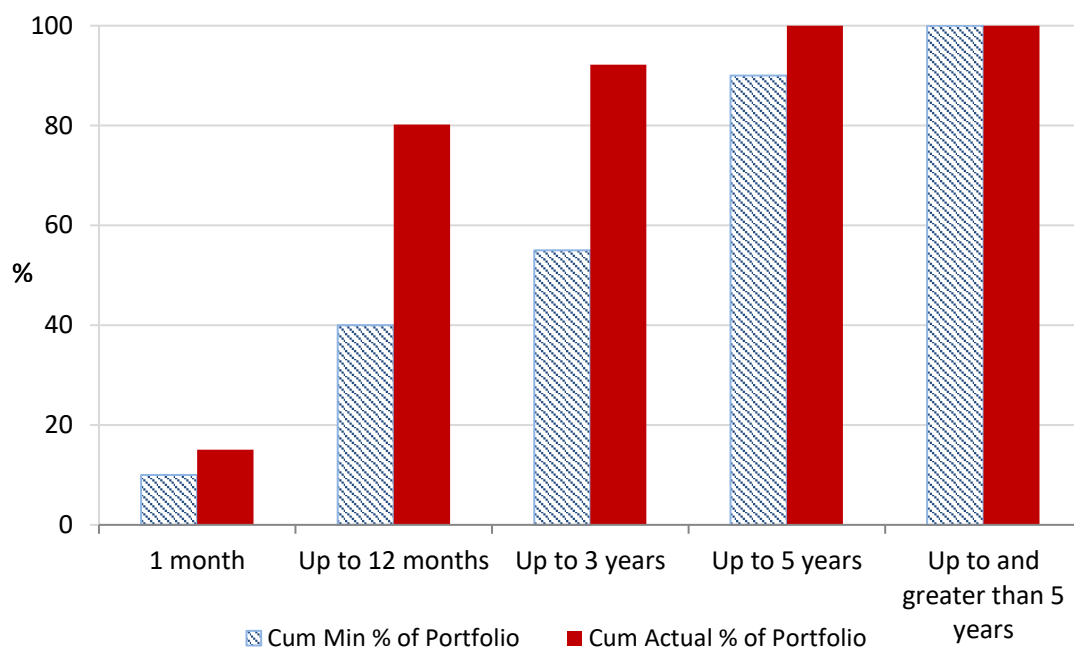


### 12 Month Rolling Averages

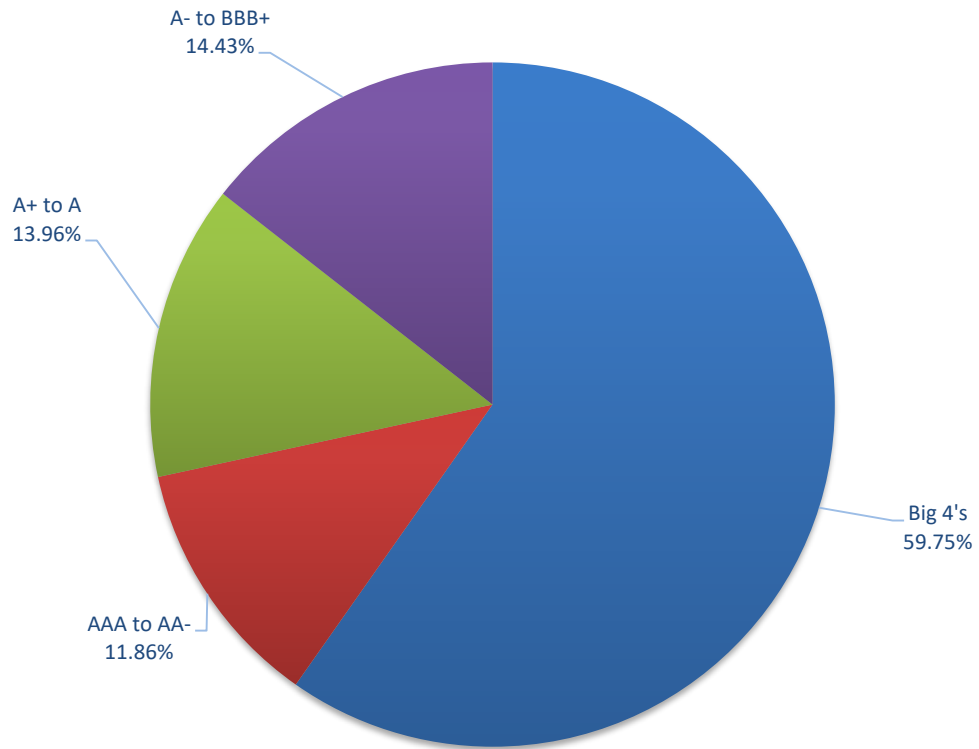
Actual Portfolio vs Strategic Enhanced Benchmark vs AusBond Benchmark vs 30 Day BBR Benchmark  
July 2025



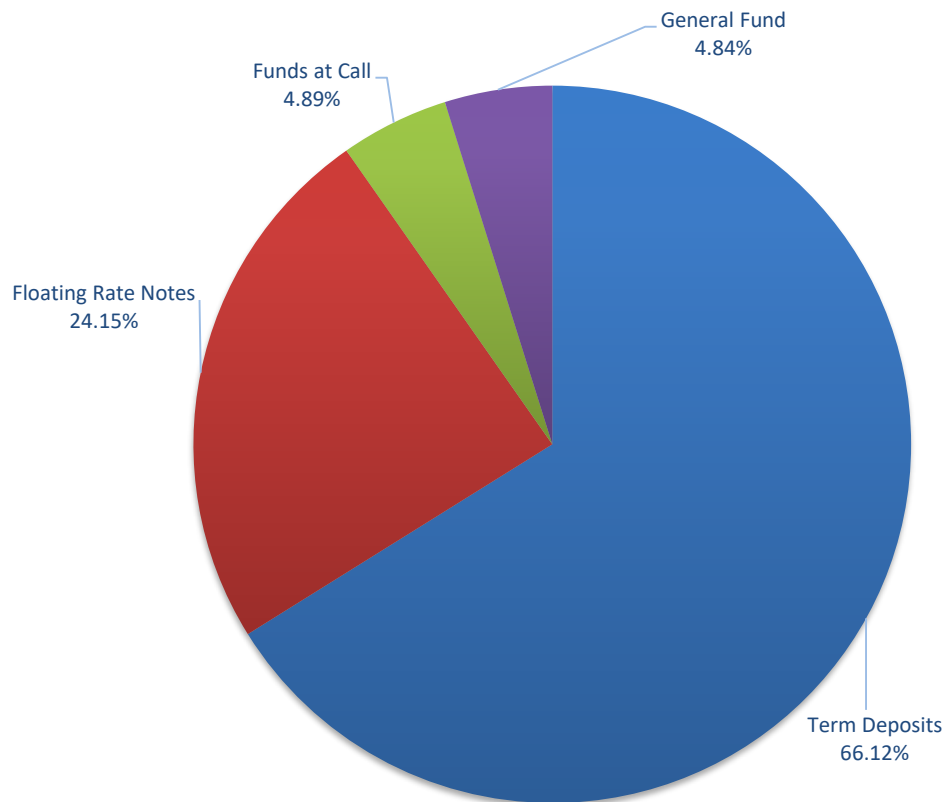
### Portfolio Liquidity - Minimum Allocations as at 31 July 2025



### Risk Profile as at 31 July 2025



### Risk Profile as at 31 July 2025



INVESTMENT AND CASH DISTRIBUTION BY FINANCIAL INSTITUTION				
as at 31 July 2025				
Institution Category	Financial Institution	Amount \$M	Financial Inst. %	Institution Cat. %
Australian Big 4 Bank's	ANZ Bank	23.0	3.1	
	Commonwealth Bank	44.0	6.0	
	National Australia Bank	134.0	18.3	
	Westpac Banking Corporation	236.3	32.3	
<b>Big 4 Total</b>		<b>437.3</b>		<b>59.75</b>
Other Australian ADIs and Australian subsidiaries of foreign institutions	Bank Australia Limited	9.5	1.3	
	Bank of Queensland	63.0	8.6	
	Bendigo & Adelaide Bank	13.0	1.8	
	Great Southern Bank (formerly Credit Union Australia)	8.9	1.2	
	ING Bank	93.2	12.7	
	Suncorp Bank	86.8	11.9	
	Macquarie Bank Ltd	9.0	1.2	
	Newcastle Greater Mutual Group Ltd	11.3	1.5	
<b>Other ADI Total</b>		<b>294.7</b>		<b>40.25</b>
<b>Grand Total</b>		<b>732.0</b>	<b>100.0</b>	<b>100.000</b>